



Capability & Experience
In Renewable Energy

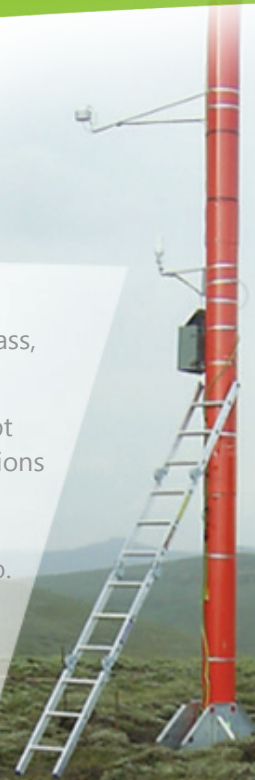
 **OVERVIEW**

ABS Africa has expertise in the environmental assessment, permitting and due diligence review of a variety of renewable energy technologies including biomass, wind, and solar.









We have applied our expertise across the project lifecycle process from concept phase to operational phase. Our team has experience with small-scale installations of 10 MWe capacity up to conceptual planning of phased renewable energy developments with a planned capacity of 6000 MWe. Our renewable energy country footprint includes projects in South Africa, Kenya, Rwanda and Lesotho.

Having completed a variety of projects in the energy sector in a number of African countries, we have become familiar with the development context in which energy projects are proposed and executed. In addition to our specific experience with various renewable energy technologies, we have also completed numerous assignments for supporting infrastructure such as transmission power lines, access roads, and borrow pits.

Our collective 40 years of experience in undertaking environmental assessments throughout Africa has equipped us with a good understanding of the Equator Principles and the IFC Performance Standards.

 **SERVICES**

We offer the following services to the renewable energy sector:

-  Environmental assessment and planning as part of concept and pre-feasibility studies
-  Environmental and Social Impact Assessments as part of regulatory requirements and/or feasibility studies
-  Development of project legal registers and environmental permit strategies aligned to the project schedule
-  Due diligence review of project documentation against IFC Performance Standards and Equator Principles
-  Project environmental permitting including water use licenses, waste management licenses, and mining permits
-  Lender's technical advisor and transaction advisory services on environmental and social governance aspects
-  Amendment of Environmental Management Programmes
-  Independent environmental compliance audits



ABS AFRICA RENEWABLE ENERGY PROJECT EXPERIENCE

▶ AMAKHALA EMOYENI PHASE 1 WIND FARM - EASTERN CAPE, SOUTH AFRICA

CENNERGI



- 🕒 Technical due diligence review of the Final Environmental Impact Assessment Report and supporting documentation for the 134 MW wind farm project near Bedford.
- 🕒 Review of project legal and permit register.
- 🕒 Identification and recommended mitigation of environmental and social governance risks to the project.
- 🕒 Review formed part of bidder's submission under the Renewable Energy Independent Power Producer's Procurement Programme (REIPPPP).

▶ LAKE TURKANA WIND POWER PROJECT - KENYA, MARSABIT WEST COUNTY



LAKE TURKANA WIND POWER

- 🕒 Compilation of a framework environmental execution plan for the proposed 300 MW wind farm development in the Loyangalani District.

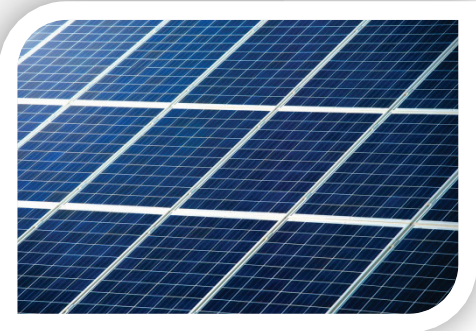
▶ LESOTHO HIGHLANDS POWER PROJECT - MOKHOTLONG DISTRICT, LESOTHO

BREEZE POWER



- 🕒 Development of terms of reference for an IFC-compliant ESIA for a 132 MW wind farm.
- 🕒 Project management of 132 MW wind farm ESIA including authority meetings, public participation process and specialist studies.
- 🕒 High-level environmental and social screening for a proposed 6000 MW wind and pumped storage master plan.
- 🕒 Compilation of environmental and social specification for appointment of an EPC.

▶ PHOTOVOLTAIC SOLAR POWER PROJECT - NORTH WEST PROVINCE, SOUTH AFRICA



CONFIDENTIAL CLIENT - FINANCIAL INSTITUTION

- 🕒 Technical due diligence review of the Subsolar Energy Final Basic Assessment Report and supporting documentation for the proposed 10 MW Concentrator Photovoltaic (CPV) Plant near Vryburg.
- 🕒 Review of project legal and permit register.
- 🕒 Identification and recommended mitigation of environmental and social governance risks to the project.
- 🕒 Review of compliance against the Equator Principles and IFC Performance Standards.

▶ WEST COAST ONE WIND ENERGY FACILITY - WESTERN CAPE, SOUTH AFRICA



EXXARO

- 🕒 Compilation of environmental and social specification for appointment of EPC for a new 94 MW wind energy facility in the Western Cape Province.

▶ WIND FARM STUDY TOUR - ONTARIO, CANADA



HATCH, ENBRIDGE, SUNCOR ENERGY PRODUCTS / ACCIONA WIND ENERGY CANADA, RENEWABLE ENERGY COMPANY

- 🕒 Study tour to various operating wind farm developments in the state of Ontario, including:
 - 99 MW Talbot Wind Energy Project
 - 20 MW Kent Breeze Wind Power Project
 - 76 MW Ripley Wind Power Project
 - 181 MW Enbridge Ontario Wind Farm
- 🕒 Introductory training in environmental permitting requirements of renewable energy developments in Ontario
- 🕒 Introductory training in construction environmental monitoring requirements for wind farm developments.

▶ LESOTHO HIGHLANDS POWER PROJECT - MOKHOTLONG DISTRICT, LESOTHO



BREEZE POWER

- 🕒 Preparation and submission of a Project Brief to the Department of Environment Affairs for the installation of five wind monitoring masts at selected locations in the Lesotho Highlands.
- 🕒 Post-construction environmental audit of the installation of four wind monitoring masts.

▶ TOUWSRIVIER CONCENTRATOR PHOTOVOLTAIC SOLAR POWER - WESTERN CAPE, SOUTH AFRICA



CONFIDENTIAL CLIENT - FINANCIAL INSTITUTION

- 🕒 Technical due diligence review of the Final Environmental Impact Assessment Report and supporting documentation for the proposed 50 MW Concentrator Photovoltaic (CPV) Plant near Touwsrivier.
- 🕒 Review of project legal and permit register.
- 🕒 Identification and recommended mitigation of environmental and social governance risks to the project.
- 🕒 Review of compliance against the Equator Principles and IFC Performance Standards.
- 🕒 Compliance review of the Environmental Management Programme.

▶ RENEWABLE ENERGY GUIDELINE - SOUTH AFRICA



DEPARTMENT OF ENVIRONMENTAL AFFAIRS AND TOURISM

- 🕒 Compilation of a guideline document on the NEMA listed activities applicable to various renewable energy technologies.

▶ RWANDA BIOMASS PROJECT - RWANDA



CONFIDENTIAL CLIENT - FINANCIAL INSTITUTION

- 🔄 High-level screening of environmental and social issues and risks for a proposed peat extraction and combustion project.
- 🔄 Compilation of a project permitting strategy and framework terms of reference for an ESIA compliant to IFC Performance Standards and Equator Principles.

▶ COPPERTON WIND FARM PROJECT - NORTHERN CAPE PROVINCE, SOUTH AFRICA



GARRIGUES

- 🔄 Technical due diligence review of the Final Environmental Impact Assessment Report and supporting documentation for the 102 MW wind farm project near Copperton.
- 🔄 Review of project legal and permit register.
- 🔄 Identification and recommended mitigation of environmental and social governance risks to the project.





CONTACT US



fanie@abs-africa.com / paul@abs-africa.com



+27 83 325 9161 / +27 82 566 2611



+27 11 805 0061



PO Box 14003, Vorna Valley, 1686, South Africa



Building 2, Country Club Estate, Woodlands Drive,
Woodmead, 2052



www.abs-africa.com